

# Q&A

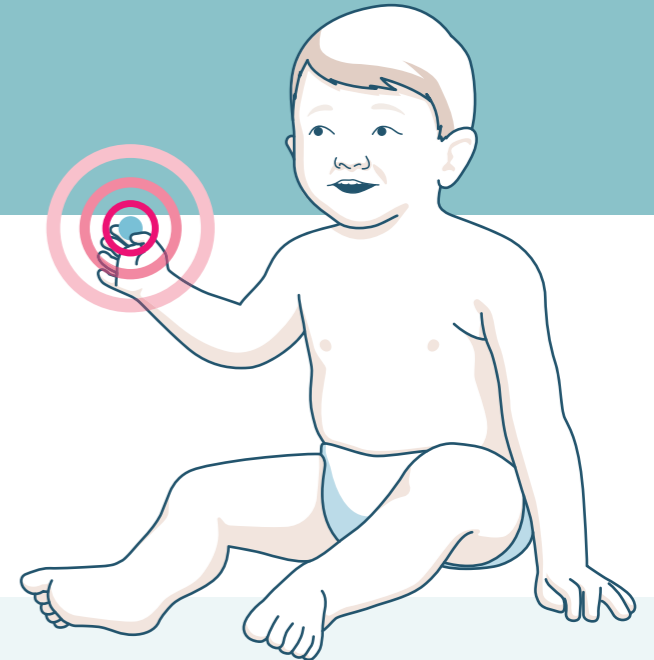
#ButtonBatteryAwareness



**What is button battery ingestion and how much of a problem is it in children?**



This mostly concerns toddlers or even infants who accidentally swallow a button battery. This is very dangerous and can be life threatening. Unfortunately, battery ingestions occur much more often than they did previously.



– **Lissy de Ridder**

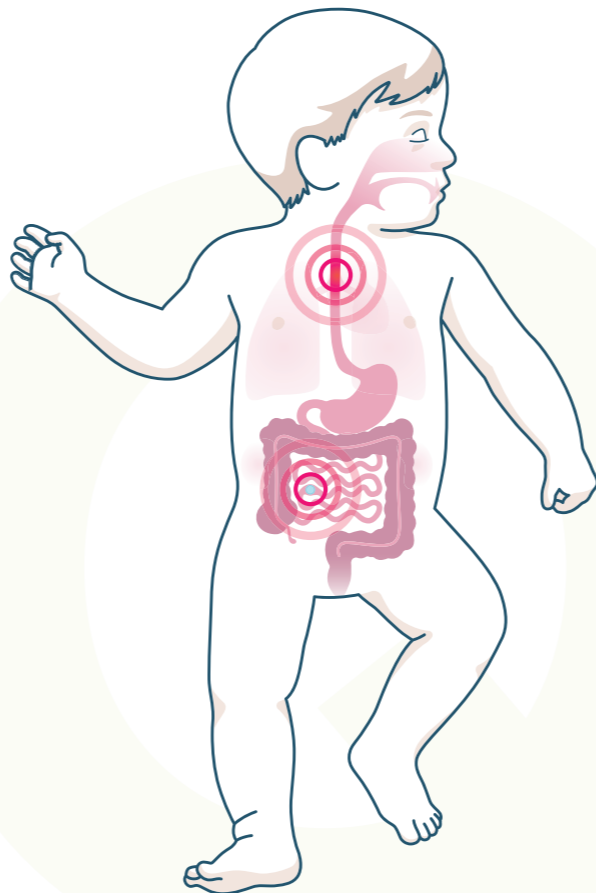
Paediatric gastroenterologist and member of the ESPGHAN  
Button Battery Ingestion Special Interest Group

**EPBA**  
EUROPEAN PORTABLE BATTERY ASSOCIATION

**ESPGHAN**



## What are the risks of a child swallowing a button battery?



When the battery gets stuck in the oesophagus, the battery very rapidly, within hours, may burn a hole through the oesophageal wall. Then, the battery may migrate to a large vessel or to the airway. This may lead to a life threatening situation.

– **Lissy de Ridder**  
Paediatric gastroenterologist  
and member of the ESPGHAN  
Button Battery Ingestion  
Special Interest Group

# Q&A

#ButtonBatteryAwareness

# Q&A

#ButtonBatteryAwareness



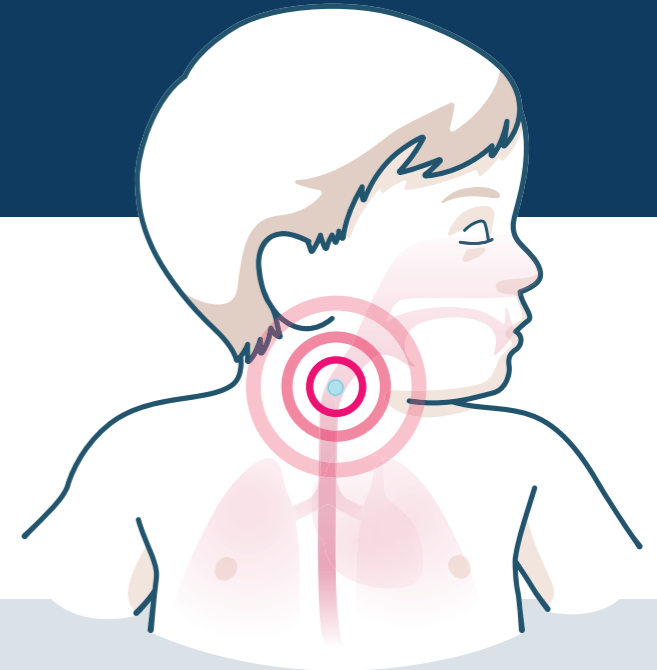
**What should you do if a child swallows a button battery?**



You should seek immediate medical attention by dialling your local emergency number or taking your child to the hospital emergency room.

– **Lissy de Ridder**

Paediatric gastroenterologist and member of the ESPGHAN  
Button Battery Ingestion Special Interest Group

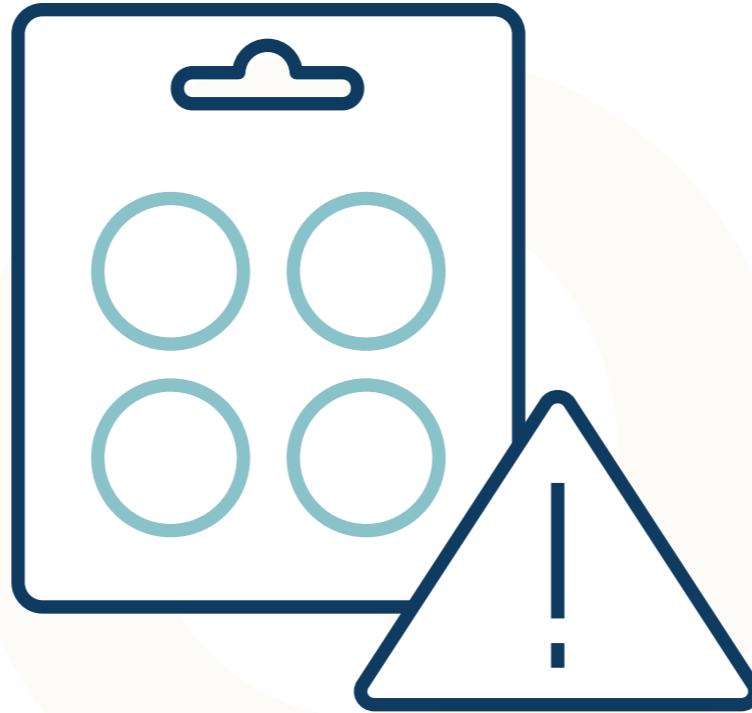




# Q&A

#ButtonBatteryAwareness

## What should you not do if your child swallows a button battery?



Do not delay your hospital visit. Do not let your child eat or drink. Do not induce vomiting.

– **Lissy de Ridder**  
Paediatric gastroenterologist  
and member of the ESPGHAN  
Button Battery Ingestion  
Special Interest Group

# Q&A

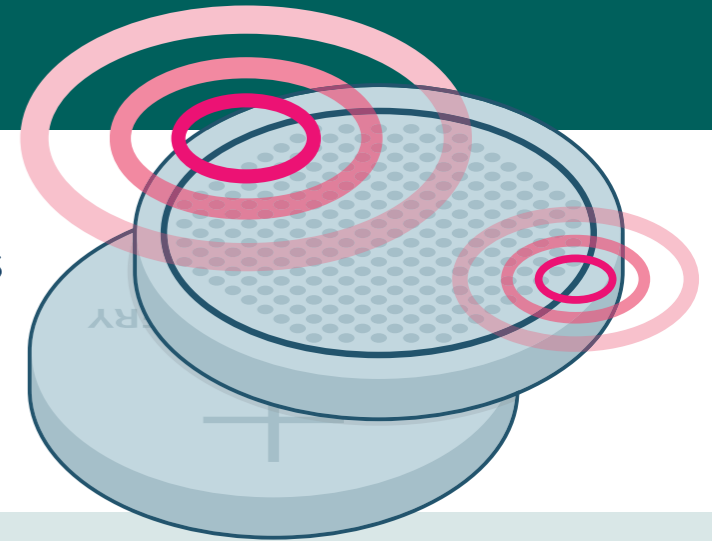
#ButtonBatteryAwareness



## How can we prevent button battery ingestion in children?



First of all, we need to increase public awareness of the injury these button batteries can cause. Secondly, we need to know which devices/toys use button batteries and make sure they are secure in their compartment. Thirdly, we should wrap any waste batteries in clear tape, recycle them safely and do not leave them loose around the house.



– **Christos Tzivinikos**

Paediatric gastroenterologist and member of the ESPGHAN  
Button Battery Ingestion Special Interest Group



## What steps are medical organisations like **ESPGHAN** taking to tackle button battery ingestion in children?



In 2021, ESPGHAN published detailed guidance on the diagnosis, management and prevention of button battery ingestion as well as summative clinical and parental advice guides. ESPGHAN has been campaigning with EPBA, industry and other stakeholders to boost awareness and prevention of button battery ingestion amongst the public and clinical staff.

– **Christos Tzivinikos**  
Paediatric gastroenterologist  
and member of the ESPGHAN  
Button Battery Ingestion  
Special Interest Group

# Q&A

#ButtonBatteryAwareness

# Q&A

#ButtonBatteryAwareness



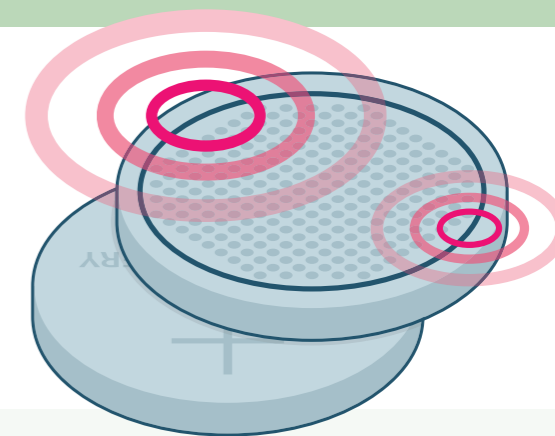
What guidance would you give to medical professionals to ensure button battery ingestion in children is diagnosed as early as possible?



A high index of clinical suspicion of button battery ingestion is needed for any child with suspected symptoms. Perform a two view x-ray, avoid misdiagnosis of a coin by looking for the halo and follow the ESPGHAN position paper guidance regarding honey use and urgent referral to a gastrointestinal endoscopist when impacted in oesophagus.

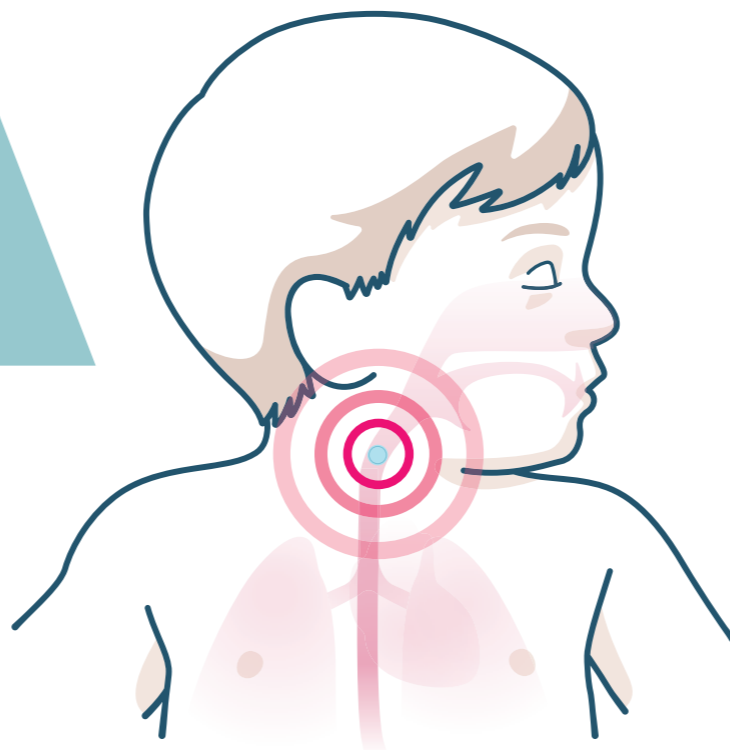
– **Christos Tzivinikos**

Paediatric gastroenterologist and member of the ESPGHAN Button Battery Ingestion Special Interest Group





## What steps should medical professionals take when they receive a child who has swallowed a button battery?



Check their vital signs and manage if abnormal. Urgently consult a gastrointestinal endoscopist if the button battery is impacted in the oesophagus and/or an ENT doctor in case of airway obstruction/location. Consider honey if it has been less than 12 hours since ingestion, the child is stable, older than 1 year, and able to swallow. Refer to the ESPGHAN position paper guidance.

– **Christos Tzivinikos**

Paediatric gastroenterologist  
and member of the ESPGHAN  
Button Battery Ingestion  
Special Interest Group

# Q&A

#ButtonBatteryAwareness



# Q&A

#ButtonBatteryAwareness

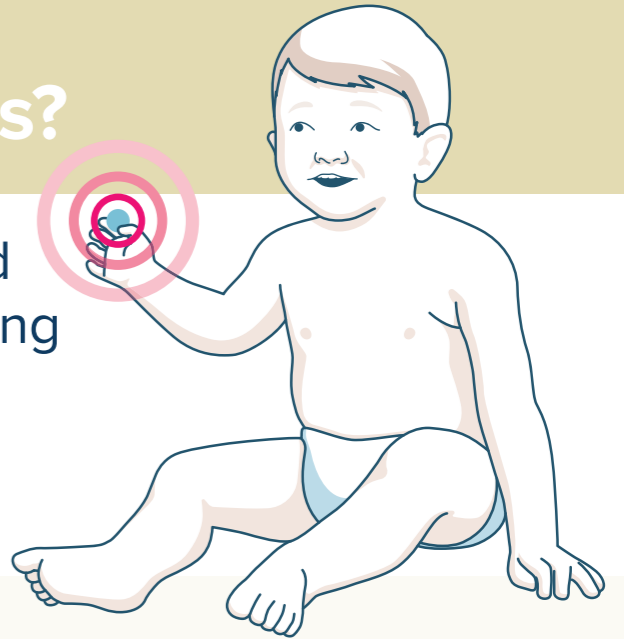


What steps are industry taking to make button batteries safer and harder for children to access?



Through international standards, industry has successfully developed child-resistant packaging, which makes it increasingly difficult for young children to access the button batteries. The industry supports the development of regulations that mandate child-resistant packaging alongside durable and secure battery compartments for products powered by button batteries

– **Carole Bachmann**  
EPBA Secretary-General





## What devices in the home use button batteries?



Button Batteries are used in a wide variety of appliances that can be found at home. They are specially used in smaller appliances such as toys, watches, remote controls, door openers, hearing aids, musical cards and small medical devices, like thermometers.

– Carole Bachmann  
EPBA Secretary-General

# Q&A

#ButtonBatteryAwareness

# Q&A

#ButtonBatteryAwareness



What steps should you take when replacing a button battery in a device?



When replacing the battery, make sure not to leave discarded button batteries laying loose around the house, ensure to securely close and store the remaining batteries in the packaging if any and ensure to securely fasten the battery compartment after replacing the button batteries of a product.

– **Carole Bachmann**  
EPBA Secretary-General





# Q&A

#ButtonBatteryAwareness

## What is the best way to safely store/dispose of button batteries?



Always store them out of sight and reach of young children and bring waste button batteries to a collection point so they can be recycled.

– Carole Bachmann  
EPBA Secretary-General